

dr kraut<sup>®</sup>  
MILANO

Professional cosmetic line

CREATED, FORMULATED  
AND MANUFACTURED IN ITALY





with  
**NATURAL**  
**INGREDIENTS**





## Born out of love for nature and beauty of every woman

**dr kraut MILANO** is a professional cosmetic line created and produced in Italy by Arco Cosmetici. The line was born to satisfy the needs of beauty professional that seek quality products with an excellent performance.

### Why dr kraut MILANO?

**KRAUT = HERBS**

for the choice of using natural and vegetal origin ingredients.

The cosmetics proposed are formulated using **selected natural ingredients, certified biological extracts** and raw materials that comply to European Cosmetic Regulations to ensure **safety, performance** and **results**.

Thanks to Arco Cosmetici's internal laboratory keen study, all the products can be easily combined with each other and to aesthetic machines (e.i. Ultrasound Facial Devices or Pressotherapy machine), allowing the creation of customized treatments for face and body.

FACE



# CLEANSE



## CLEANSING MILK MAKE-UP REMOVER

with Marine Collagen

Delicately fragranced milk that quickly and perfectly cleanses, removing impurities and make-up from face, neck and eyes. Enriched with Marine Collagen and Vegetal Oils for a soft and smooth skin.



**K1040 - 500 ml**



## MOISTURIZING CLEANSING GEL

with Marine Collagen

Fresh and gentle gel that frees the skin from impurities, leaving a delicate rose fragrance. Enriched with Marine Collagen, it donates hydration, elasticity and freshness.



**K1039 - 500 ml**



## PURIFYING CLEANSING GEL

with Tea Tree Oil

Refreshing and delicate gel formulated for the cleansing of combination, oily, acneic and with enlarged pores skin. Tea Tree Oil purifies, eliminating impurities and sebum excess.



**K1041 - 500 ml**



## SOFT GELSCRUB with Natural Microgranules

Scrub gel with Natural Microgranules that promotes a light superficial exfoliation. Skin will appear smooth and bright.



**K1010V - 500 ml**



## ACID CREAM pH 3,5 stabilized

It restores skin's natural acidity, protecting cutaneous barrier. It acts against irritation, inflammation and dryness. Suitable after scrub, waxing, sun exposure, sunlamps or any aggressive treatment.



**K1038 - 500 ml**



## SOFTENING GEL with Calendula

Special formula characterized by a gentle exfoliation that helps open skin pores, leaving the skin receptive and ready for the next products. Ideal for manual or with aesthetic equipment cleansing.



**K2004U - 500 ml**



## SOFTENING TONIC with Panthenol

Fresh and delicate tonic that restores skin hydro-lipidic balance. Panthenol, Witch Hazel Water and Chamomile Extract give comfort, brightness and freshness, leaving the skin ready to receive the next treatment products.



**K1042 - 500 ml**



## DETOX BLACK MASK with Active Charcoal and Pure Clay

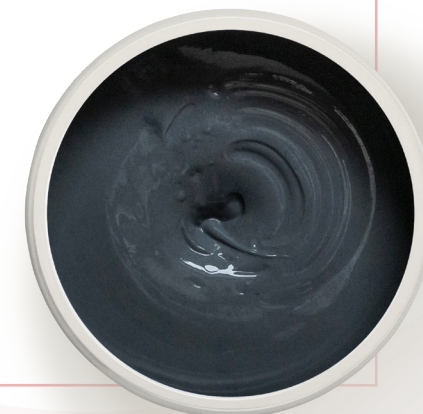
Detox mask and exfoliating scrub with a creamy texture, formulated for the care of all skin types. It leaves the skin smooth and bright.



**K1036 - 500 ml**



**K1036R - 100 ml**



# ANTIAGE



## INTENSIVE ANTIAGE ACTIVE with Soy and Acacia Extract

Intensive treatment with a light and easy to absorb texture formulated to help prevent and treat aging signs. The Soy and Acacia Extract donate compactness and smoothness to the skin.



**K1053 - 6 Vials x 6 ml**



## INTENSIVE ANTIAGE CREAM with Gelée Royale Extract

Antiage rich cream for dry, tired and toneless skin. The exclusive nourishing Gelée Royale Extract contrasts aging, leaving the skin pleasantly nourished, smooth and bright.



**K1031 - 500 ml**



## FACE, EYE AND LIP CONTOUR LIFTING CREAM with Aloe Vera gel

Easy to absorb cream designed to counteract and prevent face, eye and lip contour wrinkles, leaving the skin silky and smooth.



**K2011U - 500 ml**



## REVITALIZING ANTIAGE CREAM with Hyaluronic Acid and Vitamin E

Specific formula enriched with Hyaluronic Acid and Vitamin E to prevent and treat aging signs. Skin appears more elastic and compact.



**K1033 - 500 ml**



## ANTIAGE CREAMY MASK with Hyaluronic Acid and Vitamin E

Soft and creamy beauty mask formulated to improve skin elasticity. Its specific formula, enriched with Hyaluronic Acid and Vitamin E, helps prevent skin aging.



**K1055 - 500 ml**



**K1055R - 100 ml**



# BALANCE



## EXFOLIATING SCRUB - GENTLE with Pure Clay and Calendula

Face treatment 2 in 1: scrub to free the skin from superficial dead skin and purifying mask to fight impure skin blemishes. Skin will appear cleansed ready for the next treatment product.



K1045 - 500 ml



## PURIFYING CREAM with Tea Tree Oil and Aloe Vera

Soft texture cream formulated to treat oily and combination skin. Tea Tree Oil and Aloe Vera offer a purifying, balancing and soothing action that leaves the pores less visible and skin healthy-looking.



## PURIFYING GEL MASK with Tea Tree Oil and Lavender

Tea Tree Oil and Lavender purify pores and help maintain the proper physiological sebum level, treating blemishes typical of oily and combination skin. Skin will be smooth, refreshed, with a uniform complexion and no greasy finish.

# HYDRATE



## INTENSIVE HYDRATING ACTIVE with Hyaluronic Acid Active Precursor

Light texture concentrate formulated to donate to dry skin an intense and instant hydrating action. Hyaluronic Acid Active Precursor and Marine Elastin promote skin elasticity and compactness.



**K1050 - 6 Vials x 6 ml**



## HYDRATING GEL MASK with Marine Collagen and Red Algae

Hydrating mask formulated to donate moisture, plumpness and softness to dry, dull and stressed skin. Marine Collagen and Red Algae, thanks to their elasticizing, emollient and hydrating properties, leave the skin glowing and refreshed.



**K1060 - 500 ml**



## MASSAGE CREAM NEUTRAL

Rich and velvety cream created to ease the movements of the hands during facial massages. Can be used in combination with actives and Essential Oil.



**K1001 - 500 ml**



## MOISTURIZING LOTION with Marine Collagen

Multi-purpose lotion indicated for hydrating professional treatments.



**K1054 - 500 ml**



## INTENSIVE HYDRATING CREAM with Hyaluronic Acid and Marine Collagen

Cream that restores and maintains proper skin moisture level thanks to the combined action of Hyaluronic Acid, Marine Collagen and Marine Elastin. It treats skin dryness, donating immediate comfort to dry and dull skin.



**K1043 - 500 ml**



## MOISTURIZING PROTECTIVE CREAM NORMAL AND DRY SKINS with Hyaluronic Acid

Face cream characterized by a protective action thanks to Titanium Dioxide. In addition, Hyaluronic Acid helps treat and prevent cutaneous dryness, leaving the skin shielded from sunrays and hydrated.



**K2007U - 500 ml**

# ACTIVES



## MANDELIC ACID Peeling

Chemical exfoliating treatment that frees the skin from superficial dead cells. Aloe Vera and Chamomile Extract offer a soothing and emollient action, while Hyaluronic Acid Vegetal Alternative hydrates and elasticizes the skin. Mandelic Acid is a product that can be applied all year long on any skin type. **Mandelic Acid 10%.**



K1048 - 30 ml



## GLYCOLIC ACID Strong peeling

Chemical exfoliating product that frees the skin from superficial dead cells and promotes a cutaneous renewal, particularly indicated for treatment of skin with dark spots and aging signs. **Glycolic Acid 8%.**

**For professional use only and after specific training course.**



K1049 - 30 ml



## AZELAIC ACID derivative Purifying

Formulated to reduce excessive sebum production, it helps treat acne blemishes and purify combination and oily skin. After use, skin appears radiant and healthy with an even complexion.



K1057 - 30 ml



## ESSENTIAL OILS SYNERGY Calming

A mix of Essential Oils - Lavender, Rosemary, Marjoram - with a soothing scent, to purify and calm the skin. Highly recommend to complete and add an aromatic and relaxing note to any beauty treatment.



K1063 - 30 ml



## VITAMIN C vectorized Antioxidant

Vitamin C enhanced by the presence of Silicium and Ascorbic Acid, offers purifying, antioxidant and brightening action ideal for the treatment of normal, oily and mature skin. It fights against free radicals and oxidative stress, leaving the skin youthful, bright and plumped.



K1065 - 30 ml



## HYALURONIC ACID Antiage

Renowned for its hydrating properties, Hyaluronic Acid is an unmissable product in treatments targeted to the care of dry skin, to prevent cutaneous aging and to treat mature skin blemishes. **Hyaluronic Acid - 3% solution.**



K1066 - 30 ml



# ACTIVES



**ACEROLA  
BIOFERMENTATA**  
BIOFERMENTED ACEROLA

**VITAMINA C  
VEICOLATA**  
VITAMIN C  
VECTORIZED

**VITAMINA E  
ACETATO**  
VITAMIN E ACETATE

**OLIGOELEMENTI**  
OLIGOELEMENTS

dr.kraut  
MILANO  
SUPER BOOSTER  
VITAMIN C  
CON ACEROLA BIOFERMENTATA  
WITH BIOFERMENTED ACEROLA



## **SUPER BOOSTER VITAMIN C** with Biofermented Acerola

Concentrated Vitamin C serum formulated with Biofermented Acerola, to provide the skin with an intensive anti-aging treatment and keep it young, healthy and radiant.



**K1064 - 30 ml**

# ACTIVES



**ACQUA DI ROSE**  
ROSE WATER

**ACQUA PROFUMATA NEROLI**  
NEROLI  
SCENTED WATER

**PRECURSORE DI ACIDO IALURONICO**  
HYALURONIC ACID PRECURSOR

**OLIGOELEMENTI**  
OLIGOELEMENTS

**0% PARFUM**

**dr kraut MILANO**  
**HYALURONIC ACID + PEPTIDES**  
Siero viso idratante - liftante  
MOISTURIZING - PLUMPING FACIAL SERUM



## HYALURONIC ACID + PEPTIDES

Moisturizing - plumping facial serum

Facial Serum moisturizing and anti-aging formulated with Peptides, high molecular weight Hyaluronic Acid and Hyaluronic Acid Precursor to stimulate the production of collagen and give the face a tonic aspect, providing deep hydration.



K1067 - 30 ml

BODY



# EXFOLIATE



## SEA SALT SCRUB with Thyme Essential Oil

Scrub that promotes a mechanical exfoliation that frees the skin from dead cells, leaving it smooth, toned and ready for the treatment process. Thyme Essential Oil assures a revitalizing effect.

 **K1004 - 500 ml**



## STRONG GELSCRUB with Natural Microgranules and Glycolic Acid

Chemical exfoliation promoted by Glycolic Acid and a mechanical peeling thanks to Natural Microgranules that remove all impurities and superficial dead cells, stimulating cellular turnover for compactness and smoothness.

 **K1010C - 500 ml**



# HANDS FEET



## HAND CREAM with Shea Butter and Chamomile

Buttery and velvety cream ideal for hand treatments and manicures. Shea Butter nourishes, while Chamomile soothes the skin, leaving the hands soft and smooth.

 **K1024 - 500 ml**



## FOOT CREAM with Shea Butter and Mint

Velvety cream that nourishes and refreshes tired and dry skin. Excellent for pedicures and foot massages.

 **K1026 - 500 ml**



## RHAGADES - CHILBLAIN CREAM with Aloe Vera Gel, Lavender and Thyme Essential Oils

Rich cream formulated with Essential Oils to fight and resolve problems related to dryness, skin thickening, rhagades, chilblain and small wounds that arise especially during cold season. Suitable for hands, feet and body.

 **K1025 - 500 ml**



## SOFTENING SPRAY FOR CALLUS AND CORNS

Softening spray formulated to facilitate the professional removal of callus and corns. The formulation contains Glycolic Acid, which promotes the natural skin exfoliation.

 **K1023 - 150 ml**

# MASSAGE



## MASSAGE CREAM NEUTRAL

A mix of functional ingredients - Wheat Germ Oil, Pure Caffeine, Ivy Extract, Arnica Extract - to nourish, tone, protect and improve hands movement during the massage treatments.

 **K1002 - 500 ml**



## MASSAGE OIL ELASTICIZING with Omega 3-6


Massage oil formulated for the treatment of toneless and sagging skin. Omega 3-6 prevents dryness, leaving skin elastic and compact.

 **K1015 - 500 ml**



## MASSAGE OIL NEUTRAL

Neutral oil ideal to improve hands movements during massages. Excellent in combination with Essential Oils.

 **K1013 - 500 ml**



## MASSAGE OIL NOURISHING with Almond Oil

Rich massage oil enriched with Almond Oil to prevent skin dryness, elasticize and tone the skin, leaving it smooth and nourished. Ideal for dry, stretched and toneless skin.

 **K1016 - 500 ml**



## MASSAGE OIL CELLULITE\* with Ivy Extract

Adjuvant in the cosmetic treatment of cellulite and adiposity cutaneous blemishes. The combined action of Ivy Extract to specific manual massage helps stimulate superficial skin circulation that leaves the skin toned and nourished.

 **K1014 - 500 ml**



## MASSAGE OIL SILK EFFECT

Massage oil formulated to ease manual manoeuvres during body massages. Formulated with Almond Oil, it leaves the skin nourished, velvety and pleasantly scented.

 **K1017 - 500 ml**



## MASSAGE OIL DRAINING REFRESHING With Ginger and Mint Essential Oils

Professional oil formulated to perform any type of body massage thanks to its texture, which eases manual movements. It's particularly indicated for toning sagging skin, for reducing excess fluids and as cosmetic adjuvant in the treatment of cellulite and adiposity cutaneous blemishes thanks to the combined action of its Essential Oils.

 **K1099 - 5000 ml**



## SALINE EMOLLIENT GEL Ions passage adjuvant appliances face - body

Gel formulated for treatments performed in combination with aesthetic equipment to facilitate the ionic transition from the equipment to the skin. It's not greasy and it does not leave stains.

 **K1019 - 500 ml**



# FIRM



## FIRMING CREAM with Hops and Shea Butter

Firming cream enriched with Hops and Shea Butter, to nourish, tone and smooth toneless and sagging skin.



**K1005 - 500 ml**



## DETOX MUD with Pure Clay and Vulcanyl

Creamy mud formulated with Pure Clay and Vulcanyl to purify and smooth any skin type. It absorbs impurities and is a cosmetic adjuvant in the treatment of cellulite and water retention cutaneous blemishes, leaving the treated area firm and toned.



**K1012 - 500 ml**



## FIRMING GEL BANDAGES Cold effect with Menthol and Panthenol

Cold effect gel formulated to soothe swellings and heaviness that affect lower limbs, thanks to the combined action of Menthol and Mint Essential Oil. It donates freshness and lightness. Excellent for bandages.



**K1018 - 500 ml**



## FIRMING LOTION BANDAGES Cold effect with Horse Chestnut and Menthol

Cold effect lotion indicated for bandages to treat swelling, donate relief to heaviness and to tone sagging skin. After the treatment skin appears firm and refreshed.



**K1027 - 500 ml**



## READY TO USE SALINE BANDAGES HEAVY LEGS Cold effect with Menthol

Bandages indicated as cosmetic adjuvant in the treatment of water retention cutaneous blemishes thanks to the combine action of Sea Salt, Algae Extract and Menthol. Tired and heavy legs are revitalized, skin toned up and compact.



**K1074 - 2 bandages - 15 cm x 5 m**



# SLIM



## THERMO CELLULITE\* MUD with Red Chilli Pepper

Hot effect gel ideal for toning treatment and as cosmetic adjuvant in the treatment of cellulite cutaneous blemishes. Ideal for body bandages. Skin will appear toned and compact.

 **K1011 - 500 ml**



## THERMO CELLULITE\* BANDAGES GEL with Red Chilli Pepper

Cosmetic adjuvant in the treatment of cellulite and adiposity cutaneous blemishes thanks to the intensive and targeted action of Ethylnicotinate and Ivy Extract. The use of the cream combined with a professional massage donates a smoother and a firmer look to the treated areas.

 **K1020 - 500 ml**



## CELLULITE\* CREAM with Caffeine and Algae Extract

Smooth mud enriched with Red Chilli Pepper, Pure Clay and Cinnamon Essential Oil to purify the skin and for an adjuvant treatment against cellulite and adiposity blemishes. Excellent for body wraps.

 **K1003 - 500 ml**



## THERMO CELLULITE\* CREAM with Ethylnicotinate and Aescin

Cosmetic adjuvant in the treatment of cellulite and adiposity cutaneous blemishes thanks to the intensive and targeted action of Ethylnicotinate and Ivy Extract. The use of the cream combined with a professional massage donates a smoother and a firmer look to the treated areas.

 **K1008E - 500 ml**



## INTENSIVE CELLULITE\* CREAM with Red Chilli Pepper

Functional cream formulated as cosmetic adjuvant in the treatment of cellulite cutaneous blemishes thanks to the heating and stimulating action of Red Chilli Pepper. Applied during the treatments, it helps to tone and compact troubled skin.

 **K1008P - 500 ml**



## READY TO USE SALINE BANDAGES CELLULITE\* Hot effect with Ethylnicotinate and Algae

Bandages ideal for toning treatments and as adjuvant in the treatment of cellulite cutaneous blemishes. It improves the appearance of skin troubled by cellulite and localized adipose accumulation, for a firm and even skin.

  **K1075 - 2 bandages - 15 cm x 5 m**

# ACTIVES



## CAFFEINE Strong cellulite\*

Light serum formulated as cosmetic adjuvant in the treatment of cellulite and adiposity blemishes. Caffeine offers a stimulating, energizing and draining action, ideal to potentiate treatments and leave the skin toned and smooth.



K1095 - 30 ml



## HOPS Elasticizing

Serum ideal for treatment of toneless and sagging skin. Flavonoids and Bioactive Peptides contained in Hops offer a toning action which leaves the skin firmed, elasticized and tone.



K1097 - 30 ml



## ESSENTIAL OILS SYNERGY Detox-draining

Oil to purify and refresh the skin, ideal for body massage with stimulating actions and to help counteract blemishes caused by water retention. Thanks to the mix of Essential Oils, it adds an aromatherapeutic note to the treatment.



K1098 - 30 ml



# HOMEUSE



## HIDRATISSIMA Moisturizing emulsion - Toning deep action with Argan Oil

Rich body emulsion easy to absorb formulated with Argan Oil, Jojoba Oil and Avocado Oil. Excellent to provide daily hydration after bath or shower, to refresh and soften the skin.



K1007 - 500 ml

## FACE

### CLEANSER LINE

<b>K1040</b>	CLEANSING MILK MAKE-UP REMOVER	500 ml
<b>K1039</b>	MOISTURIZING CLEANSING GEL	500 ml
<b>K1041</b>	PURIFYING CLEANSING GEL	500 ml
<b>K1010V</b>	SOFT GELSCRUB	500 ml
<b>K1036</b>	DETOX BLACK MASK	500 ml
<b>K2004U</b>	SOFTENING GEL	500 ml
<b>K1042</b>	SOFTENING TONIC	500 ml
<b>K1038</b>	ACID CREAM	500 ml

### ANTIAGE LINE

<b>K1053</b>	INTENSIVE ANTIAGE ACTIVE	6x6 ml
<b>K1055</b>	ANTIAGE CREAMY MASK	500 ml
<b>K1031</b>	INTENSIVE ANTIAGE CREAM	500 ml
<b>K1033</b>	REVITALIZING ANTIAGE CREAM	500 ml
<b>K2011U</b>	FACE, EYE AND LIP CONTOUR LIFTING CREAM	500 ml

### BALANCE LINE

<b>K1045</b>	EXFOLIATING SCRUB - GENTLE	500 ml
<b>K1046</b>	PURIFYING CREAM	500 ml
<b>K1062</b>	PURIFYING GEL MASK	500 ml

### HYDRATE LINE

<b>K1050</b>	INTENSIVE HYDRATING ACTIVE	6x6 ml
<b>K1060</b>	HYDRATING GEL MASK	500 ml
<b>K1001</b>	MASSAGE CREAM NEUTRAL	500 ml
<b>K1054</b>	MOISTURIZING LOTION	500 ml
<b>K1043</b>	INTENSIVE HYDRATING CREAM	500 ml
<b>K2007U</b>	MOISTURIZING PROTECTIVE CREAM NORMAL AND DRY SKINS	500 ml

### ACTIVES LINE

<b>K1048</b>	MANDELIC ACID	30 ml
<b>K1049</b>	GLYCOLIC ACID	30 ml
<b>K1057</b>	AZELAIC ACID derivative	30 ml
<b>K1065</b>	VITAMIN C vectorized	30 ml
<b>K1066</b>	HYALURONIC ACID	30 ml
<b>K1063</b>	ESSENTIAL OILS SYNERGY	30 ml
<b>K1064</b>	SUPER BOOSTER VITAMIN C	30 ml
<b>K1067</b>	HYALURONIC ACID + PEPTIDES	30 ml

## HOMEUSE

<b>K1036R</b>	DETOX BLACK MASK	100 ml
<b>K1055R</b>	ANTIAGE CREAMY MASK	100 ml

## BODY

### EXFOLIATE LINE

<b>K1004</b>	SEA SALT SCRUB	500 ml
<b>K1010C</b>	STRONG GELSCRUB	500 ml

### HANDS FEET LINE

<b>K1023</b>	SOFTENING SPRAY FOR CALLUS AND CORNS	150 ml
<b>K1024</b>	HAND CREAM	500 ml
<b>K1025</b>	FOOT CREAM	500 ml
<b>K1026</b>	RHAGADES - CHILBLAIN CREAM	500 ml

### MASSAGE LINE

<b>K1002</b>	MASSAGE CREAM NEUTRAL	500 ml
--------------	-----------------------	--------

<b>K1013</b>	MASSAGE OIL NEUTRAL	500 ml
<b>K1014</b>	MASSAGE OIL NOURISHING	500 ml
<b>K1015</b>	MASSAGE OIL SILK EFFECT	500 ml
<b>K1016</b>	MASSAGE OIL CELLULITE*	500 ml
<b>K1017</b>	MASSAGE OIL ELASTICIZING	500 ml
<b>K1019</b>	SALINE EMOLLIENT GEL	500 ml
<b>K1099</b>	MASSAGE OIL DRAINING REFRESHING	5000 ml

### FIRM LINE

<b>K1005</b>	FIRMING CREAM	500 ml
<b>K1012</b>	DETOX MUD	500 ml
<b>K1018</b>	FIRMING GEL BANDAGES COLD EFFECT	500 ml
<b>K1027</b>	FIRMING LOTION BANDAGES COLD EFFECT	500 ml
<b>K1074</b>	READY TO USE SALINE BANDAGES HEAVY LEGS COLD EFFECT	2 band.

### SLIM LINE

<b>K1011</b>	THERMO CELLULITE* MUD	500 ml
<b>K1020</b>	THERMO CELLULITE* BANDAGES GEL	500 ml
<b>K1003</b>	CELLULITE* CREAM	500 ml
<b>K1008E</b>	THERMO CELLULITE* CREAM	500 ml
<b>K1008P</b>	INTENSIVE CELLULITE* CREAM	500 ml
<b>K1075</b>	READY TO USE SALINE BANDAGES CELLULITE* HOT EFFECT	2 band.

### ACTIVES LINE

<b>K1095</b>	CAFFEINE	30 ml
<b>K1097</b>	HOPS	30 ml
<b>K1098</b>	ESSENTIAL OILS SYNERGY	30 ml

### HOMEUSE LINE

<b>K1007</b>	HIDRATISSIMA - MOISTURIZING EMULSION TONING DEEP ACTION	500 ml
--------------	---	--------



**EFFICACY**  
Visible and lasting  
results



**QUALITY**  
All products are  
MADE IN ITALY



**SKIN FRIENDLY**  
Ingredients that  
respect your skin



**SAFETY**  
Products in compliance  
to European Cosmetics Regulation

dr kraut<sup>®</sup>  
MILANO



MADE IN ITALY